

Here is a brief pictorial on how to use the Tune-up tool. If you are fortunate enough to have an original from 1969, you know how cool they are! The Tune-up Wrench was originally included in the Tune-Up Tower, and is quite the collectors' item. And the best part is, the tool actually works to help you straighten bent axles and removing wheels! Who knew?

Now I'm not going to tell you that the tool will solve all of your wheel headaches, and that there are not other ways to get the job done. What I am saying is that if you use this tool correctly, it can be a handy little device to help you straighten axles and replace bearing style wheels from the early redlines!

The tool looks like a thin blade that tapers at has a small notch cut into the business end. The end you hang onto has a small eyelet for a shoe-lace or string to be looped through. I guess someone back in the 1960s thought the kids would wear the tool around their neck so they could repair the cars frequently as they blew through the superchargers!!

There are a few knock-offs out there. Here's a picture of an original and a copy below it.



The tool is 2 ³/₄" long and a little over ¹/₂" wide. It's actually very useful for two things: Straightening bent axles and removing/installing white bearing type wheels. The small cut in the tip slips over the wire axle in between the wheel and the base of the car, allowing you to have direct force on the bent section of the axle without just putting another bend on the already bent wire. Quite effective after you get the hang of it. If you are used to prying off the wheels with a small screwdriver, this tool does the job just as well if not better. When reinstalling the wheels, you place the tool on the axle behind the white bearing and then the force you apply to the wheel is isolated to the wheel and the bearing. If you've ever bent an axle while putting a wheel back on, you know how frustrating that is!

The following pages have some tips on how to use the wrench.

Web: <http://www.recovertoy.com>

Email: info@recovertoy.com

RecoverToy

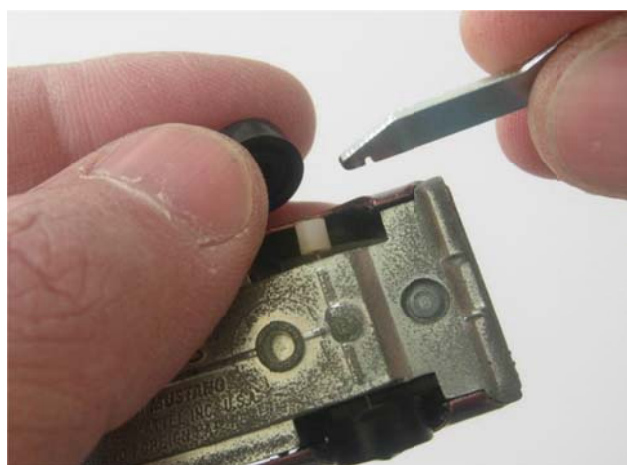
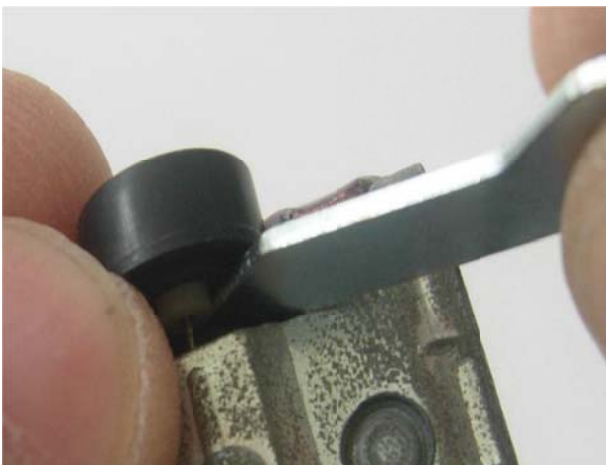
Supporting Toy Enthusiasts since 1999

Taking off a bearing type wheel.

Get the car upside-down and have the wheel you are going to work on away from you so you can see the backside clearly



Support one side of the wheel with your thumb as you hold the car. Slide the wrench into position as shown. While you are supporting the wheel with your thumb, begin to pry the wheel off slowly and gently. Make sure you are not pushing against the bearing with the wrench. All the force should be on the backside of the wheel, not the bearing. Your thumb will hold the wheel straight so the wheel does not twist while you are prying with the wrench on the opposite side of the wheel.



The wheel will slide off into your hand.

Web: <http://www.recovertoy.com>

Email: info@recovertoy.com

RecoverToy

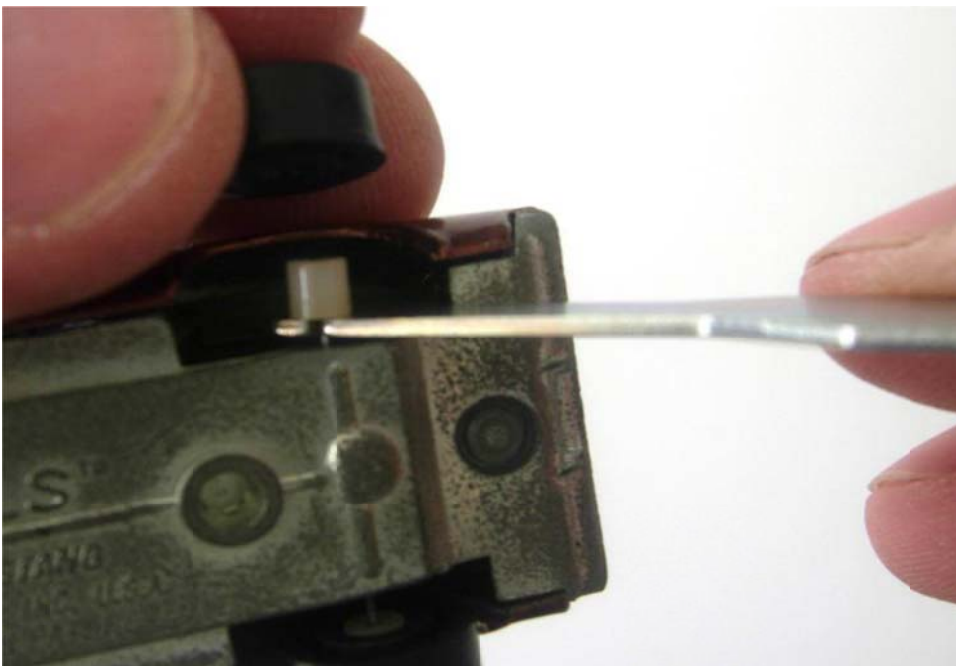
Supporting Toy Enthusiasts since 1999

Putting a wheel back on:

Slide the wrench in behind the bearing as shown in the picture below. Always have the wrench approach the axle from the bumper side of the car. This will give you the best grip on the car with your other hand during the process. With the wrench engaged behind the bearing, you can actually hold the car like this with one hand.



Take the loose wheel with your other hand and slide it over the bearing. Use the wrench to ensure that the bearing is stable as you slide the wheel on.



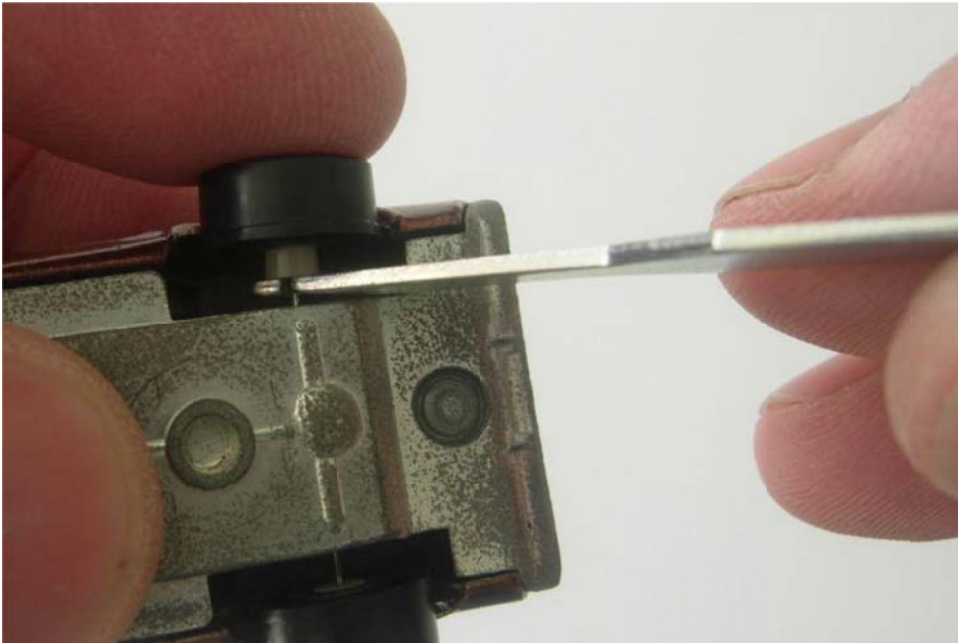
Web: <http://www.recovertoy.com>

Email: info@recovertoy.com

RecoverToy

Supporting Toy Enthusiasts since 1999

Press the wheel onto the bearing until the bearing is flush with the backside of the wheel. There should be no need to force it on. These things slide together easily.



Your wheel is installed! To straighten the axle, start from this position and manipulate the wheel and axle carefully to your desired position. Don't twist too hard, as the axle is only piano wire



Take a look at our web site store <http://www.recovertoy.com> for more Hotwheels parts and wheels.

Web: <http://www.recovertoy.com>

Email: info@recovertoy.com

RecoverToy

Supporting Toy Enthusiasts since 1999